

## Ontluchtingsdoppen met spatscherm, technopolymeer

### AFDEKKING

- Technopolymeer op polyamidebasis (PA), semi-matte afwerking.
- SFP.....: RAL 2004 oranje, 'OIL'-markering.
- SFP.....-C9: RAL 9005 zwarte kleur, 'OIL'-markering.
- SFP.....-C2-N: RAL 2004 oranje, zonder 'OIL'-markering.
- SFP.....-C9-N: RAL 9005 zwarte kleur, zonder 'OIL'-markering.

### DRAADFITTING

Technopolymeer op polyamidebasis (PA), zwarte kleur, semi-matte afwerking.

### PAKKINGRING

NBR synthetisch rubber.

### SPATSCHERM

technopolymeer.

### STANDAARDUITVOERINGEN

- **SFP:** zonder luchtfilter (zwart spatscherm).
- **SFP+F-FIL:** met 'tech-fil' luchtfilter in verzinkt staaldraad (oranje spatscherm).
- **SFP+F-FOAM:** met 'tech-foam' luchtfilter in polyurethaanschuim/raster (polyester basis), luchtfiltratie 40 μ (grijs spatscherm).
- **SFP-BA+F:** met 'tech-foam' luchtfilter in polyurethaanschuim/raster (polyester basis), luchtfiltratie 40 μ (grijs spatscherm).

Verzinkte bajonet van staalplaat.

Verchroomde stalen veiligheidsketting.

### MAXIMALE CONTINUE WERKTEMPERATUUR

100°C.

### EIGENSCHAPPEN EN TOEPASSING

SFP. ontluchttingsdoppen worden geleverd met een spatscherm (originele ELESAs-uitvoering) die olieverlies voorkomt en zijn bijzonder geschikt voor gebruik waar olie heftig wordt geagiteerd en tegen de ontluchttingsdop kan spatten.



ELESAs Original design

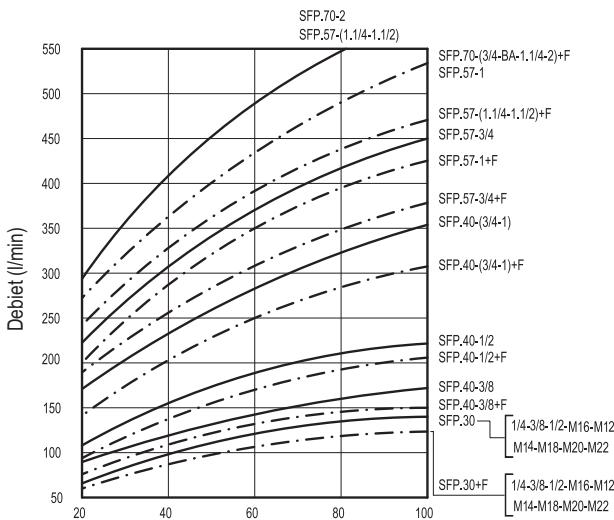


### TECHNISCHE GEGEVENS

Het luchtdebiet voor elk model kan worden bepaald uit de grafiek die het verschil berekent tussen de druk binnen en buiten het reservoir.

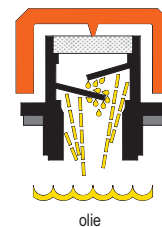
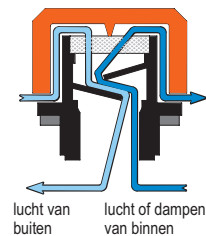
### SPECIALE UITVOERING OP AANVRAAG

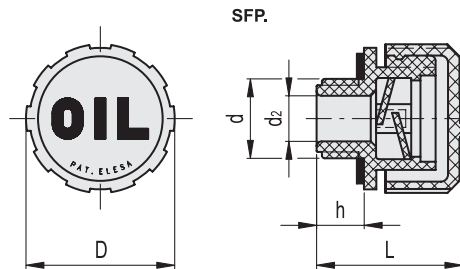
Schroefdraadconnector ook met NPT-draad (National Taper Pipe Thread - ANSI-ASME B1-20) voor de codes gemarkeerd met # in de tabel.



Drukafname (mb)  
(verschil tussen de druk binnen en buiten het reservoir)

### Operationele lay-out





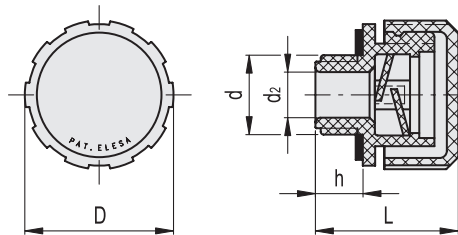
## SFP.

Code	Beschrijving	D	d	L	d2	h	
54141	SFP.30-12x1.5	31	M12x1.5	29.5	6	9.5	10
54141-C9	SFP.30-12x1.5-C9	31	M12x1.5	29.5	6	9.5	10
54161	SFP.30-14x1.5	31	M14x1.5	29.5	8	9.5	10
54161-C9	SFP.30-14x1.5-C9	31	M14x1.5	29.5	8	9.5	10
53941	SFP.30-16x1.5	31	M16x1.5	29.5	10	9.5	12
53941-C9	SFP.30-16x1.5-C9	31	M16x1.5	29.5	10	9.5	12
53961	SFP.30-18x1.5	31	M18x1.5	29.5	10	9.5	12
53961-C9	SFP.30-18x1.5-C9	31	M18x1.5	29.5	10	9.5	12
53981	SFP.30-20x1.5	31	M20x1.5	29.5	12	9.5	12
53981-C9	SFP.30-20x1.5-C9	31	M20x1.5	29.5	12	9.5	12
53991	SFP.30-22x1.5	31	M22x1.5	29.5	12	9.5	13
53991-C9	SFP.30-22x1.5-C9	31	M22x1.5	29.5	12	9.5	13
53935	SFP.30-1/4#	31	G1/4	29.5	8	9.5	12
53935-C9	SFP.30-1/4-C9#	31	G1/4	29.5	8	9.5	12
54001	SFP.30-3/8	31	G3/8	29.5	10	9.5	12
54001-C9	SFP.30-3/8-C9	31	G3/8	29.5	10	9.5	12
54101	SFP.30-1/2	31	G1/2	29.5	12	9.5	12
54101-C9	SFP.30-1/2-C9	31	G1/2	29.5	12	9.5	12
56651	SFP.40-3/8#	42	G3/8	36.5	10	11.5	22
56651-C9	SFP.40-3/8-C9#	42	G3/8	36.5	10	11.5	22
56671	SFP.40-1/2#	42	G1/2	36.5	12	11.5	24
56671-C9	SFP.40-1/2-C9#	42	G1/2	36.5	12	11.5	24
54201	SFP.40-3/4#	42	G3/4	36.5	18	11.5	26
54201-C9	SFP.40-3/4-C9#	42	G3/4	36.5	18	11.5	25
54301	SFP.40-1	42	G1	36.5	18	11.5	26
54301-C9	SFP.40-1-C9	42	G1	36.5	18	11.5	26
56701	SFP.57-3/4#	57	G3/4	42	18	14	43
56701-C9	SFP.57-3/4-C9#	57	G3/4	42	18	14	43
56731	SFP.57-1	57	G1	42	23	14	43
56731-C9	SFP.57-1-C9	57	G1	42	23	14	43
54401	SFP.57-1¼	57	G1¼	44	28	16	46
54401-C9	SFP.57-1¼-C9	57	G1¼	44	28	16	46
54501	SFP.57-1½	57	G1½	44	28	16	47
54501-C9	SFP.57-1½-C9	57	G1½	44	28	16	46
54876	SFP.70-2	70	G2	59	23	17	91
54876-C9	SFP.70-2-C9	70	G2	59	23	17	91

# Types beschikbaar op aanvraag met NPT-draad (National Taper Pipe Thread - ANSI-ASME B1-20).



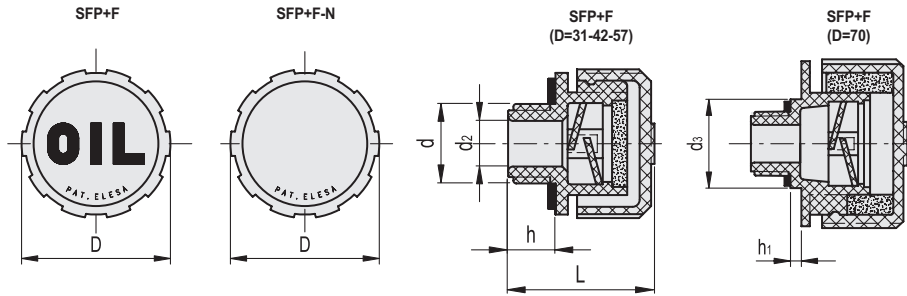
SFP-N



SFP-N

Code	Beschrijving	D	d	L	dz	h	⚖
54141-C2-N	SFP.30-12x1.5-C2-N	31	M12x1.5	29.5	6	9.5	10
54141-C9-N	SFP.30-12x1.5-C9-N	31	M12x1.5	29.5	6	9.5	10
54161-C2-N	SFP.30-14x1.5-C2-N	31	M14x1.5	29.5	8	9.5	10
54161-C9-N	SFP.30-14x1.5-C9-N	31	M14x1.5	29.5	8	9.5	10
53941-C2-N	SFP.30-16x1.5-C2-N	31	M16x1.5	29.5	10	9.5	12
53941-C9-N	SFP.30-16x1.5-C9-N	31	M16x1.5	29.5	10	9.5	12
53961-C2-N	SFP.30-18x1.5-C2-N	31	M18x1.5	29.5	10	9.5	12
53961-C9-N	SFP.30-18x1.5-C9-N	31	M18x1.5	29.5	10	9.5	12
53981-C2-N	SFP.30-20x1.5-C2-N	31	M20x1.5	29.5	12	9.5	12
53981-C9-N	SFP.30-20x1.5-C9-N	31	M20x1.5	29.5	12	9.5	12
53991-C2-N	SFP.30-22x1.5-C2-N	31	M22x1.5	29.5	12	9.5	13
53991-C9-N	SFP.30-22x1.5-C9-N	31	M22x1.5	29.5	12	9.5	13
53935-C2-N	SFP.30-1/4-C2-N#	31	G1/4	29.5	8	9.5	12
53935-C9-N	SFP.30-1/4-C9-N#	31	G1/4	29.5	8	9.5	12
54001-C2-N	SFP.30-3/8-C2-N	31	G3/8	29.5	10	9.5	12
54001-C9-N	SFP.30-3/8-C9-N	31	G3/8	29.5	10	9.5	12
54101-C2-N	SFP.30-1/2-C2-N	31	G1/2	29.5	12	9.5	12
54101-C9-N	SFP.30-1/2-C9-N	31	G1/2	29.5	12	9.5	12
56651-C2-N	SFP.40-3/8-C2-N#	42	G3/8	36.5	10	11.5	23
56651-C9-N	SFP.40-3/8-C9-N#	42	G3/8	36.5	10	11.5	22
56671-C2-N	SFP.40-1/2-C2-N#	42	G1/2	36.5	12	11.5	24
56671-C9-N	SFP.40-1/2-C9-N#	42	G1/2	36.5	12	11.5	24
54201-C2-N	SFP.40-3/4-C2-N#	42	G3/4	36.5	18	11.5	25
54201-C9-N	SFP.40-3/4-C9-N#	42	G3/4	36.5	18	11.5	25
54301-C2-N	SFP.40-1-C2-N	42	G1	36.5	18	11.5	26
54301-C9-N	SFP.40-1-C9-N	42	G1	36.5	18	11.5	26
56701-C2-N	SFP.57-3/4-C2-N#	57	G3/4	42	18	14	43
56701-C9-N	SFP.57-3/4-C9-N#	57	G3/4	42	18	14	43
56731-C2-N	SFP.57-1-C2-N	57	G1	42	23	14	43
56731-C9-N	SFP.57-1-C9-N	57	G1	42	23	14	43
54401-C2-N	SFP.57-1¼-C2-N	57	G1¼	44	28	16	46
54401-C9-N	SFP.57-1¼-C9-N	57	G1¼	44	28	16	46
54501-C2-N	SFP.57-1½-C2-N	57	G1½	44	28	16	46
54501-C9-N	SFP.57-1½-C9-N	57	G1½	44	28	16	46
54876-C2-N	SFP.70-2-C2-N	70	G2	59	23	17	91
54876-C9-N	SFP.70-2-C9-N	70	G2	59	23	17	91

# Types beschikbaar op aanvraag met NPT-draad (National Taper Pipe Thread - ANSI-ASME B1-20).

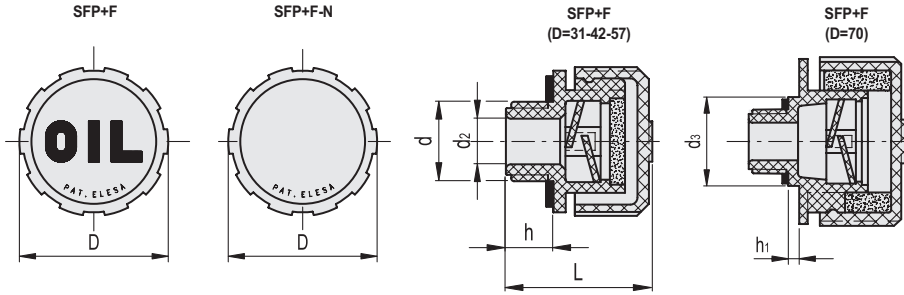


SFP+F-FIL


Code	Beschrijving	D	d	L	d2	h	⚖️
54151	SFP.30-12x1.5+F FIL	31	M12x1.5	29.5	6	9.5	10
54151-C9	SFP.30-12x1.5+F FIL-C9	31	M12x1.5	29.5	6	9.5	10
54171	SFP.30-14x1.5+F FIL	31	M14x1.5	29.5	8	9.5	10
54171-C9	SFP.30-14x1.5+F FIL-C9	31	M14x1.5	29.5	8	9.5	10
53951	SFP.30-16x1.5+F FIL	31	M16x1.5	29.5	10	9.5	13
53951-C9	SFP.30-16x1.5+F FIL-C9	31	M16x1.5	29.5	10	9.5	13
53971	SFP.30-18x1.5+F FIL	31	M18x1.5	29.5	10	9.5	14
53971-C9	SFP.30-18x1.5+F FIL-C9	31	M18x1.5	29.5	10	9.5	14
53986	SFP.30-20x1.5+F FIL	31	M20x1.5	29.5	12	9.5	14
53986-C9	SFP.30-20x1.5+F FIL-C9	31	M20x1.5	29.5	12	9.5	14
53996	SFP.30-22x1.5+F FIL	31	M22x1.5	29.5	12	9.5	16
53996-C9	SFP.30-22x1.5+F FIL-C9	31	M22x1.5	29.5	12	9.5	16
53937	SFP.30-1/4+F FIL	31	G1/4	29.5	8	9.5	13
53937-C9	SFP.30-1/4+F FIL-C9	31	G1/4	29.5	8	9.5	13
54021	SFP.30-3/8+F FIL	31	G3/8	29.5	10	9.5	13
54021-C9	SFP.30-3/8+F FIL-C9	31	G3/8	29.5	10	9.5	13
54121	SFP.30-1/2+F FIL	31	G1/2	29.5	12	9.5	14
54121-C9	SFP.30-1/2+F FIL-C9	31	G1/2	29.5	12	9.5	14
56661	SFP.40-3/8+F FIL	42	G3/8	36.5	10	11.5	28
56661-C9	SFP.40-3/8+F FIL-C9	42	G3/8	36.5	10	11.5	28
56681	SFP.40-1/2+F FIL	42	G1/2	36.5	12	11.5	29
56681-C9	SFP.40-1/2+F FIL-C9	42	G1/2	36.5	12	11.5	29
54221	SFP.40-3/4+F FIL	42	G3/4	36.5	18	11.5	30
54221-C9	SFP.40-3/4+F FIL-C9	42	G3/4	36.5	18	11.5	30
54321	SFP.40-1+F FIL	42	G1	36.5	18	11.5	32
54321-C9	SFP.40-1+F FILC9	42	G1	36.5	18	11.5	32
56711	SFP.57-3/4+F FIL	57	G3/4	42	18	14	51
56711-C9	SFP.57-3/4+F FIL-C9	57	G3/4	42	18	14	51
56741	SFP.57-1+F FIL	57	G1	42	23	14	52
56741-C9	SFP.57-1+F FIL-C9	57	G1	42	23	14	52
54421	SFP.57-1¼+F FIL	57	G1¼	44	28	16	55
54421-C9	SFP.57-1¼+F FIL-C9	57	G1¼	44	28	16	55
54521	SFP.57-1½+F FIL	57	G1½	44	28	16	56
54521-C9	SFP.57-1½+F FIL-C9	57	G1½	44	28	16	56

# Types beschikbaar op aanvraag met NPT-draad (National Taper Pipe Thread - ANSI-ASME B1-20).



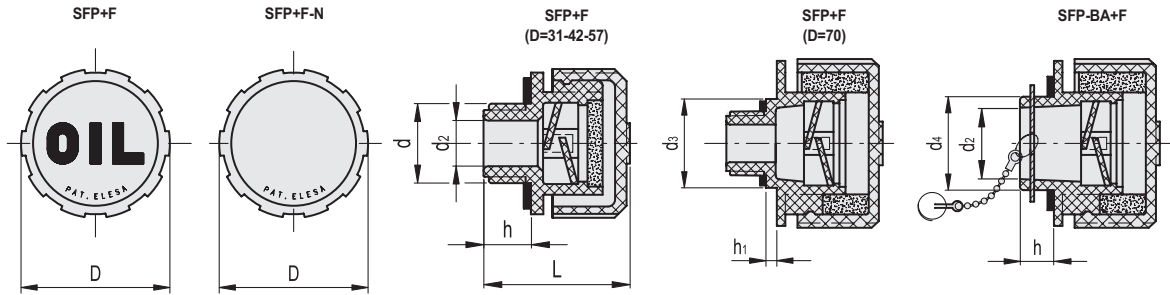


SFP+F-FIL-N

Code	Beschrijving	D	d	L	d2	h	
54151-C2-N	SFP.30-12x1.5+F FIL-C2-N	31	M12x1.5	29.5	6	9.5	10
54151-C9-N	SFP.30-12x1.5+F FIL-C9-N	31	M12x1.5	29.5	6	9.5	10
54171-C2-N	SFP.30-14x1.5+F FIL-C2-N	31	M14x1.5	29.5	8	9.5	10
54171-C9-N	SFP.30-14x1.5+F FIL-C9-N	31	M14x1.5	29.5	8	9.5	10
53951-C2-N	SFP.30-16x1.5+F FIL-C2-N	31	M16x1.5	29.5	10	9.5	13
53951-C9-N	SFP.30-16x1.5+F FIL-C9-N	31	M16x1.5	29.5	10	9.5	13
53971-C2-N	SFP.30-18x1.5+F FIL-C2-N	31	M18x1.5	29.5	10	9.5	14
53971-C9-N	SFP.30-18x1.5+F FIL-C9-N	31	M18x1.5	29.5	10	9.5	14
53986-C2-N	SFP.30-20x1.5+F FIL-C2-N	31	M20x1.5	29.5	12	9.5	14
53986-C9-N	SFP.30-20x1.5+F FIL-C9-N	31	M20x1.5	29.5	12	9.5	14
53996-C2-N	SFP.30-22x1.5+F FIL-C2-N	31	M22x1.5	29.5	12	9.5	16
53996-C9-N	SFP.30-22x1.5+F FIL-C9-N	31	M22x1.5	29.5	12	9.5	16
53937-C2-N	SFP.30-1/4+F FIL-C2-N	31	G1/4	29.5	8	9.5	13
53937-C9-N	SFP.30-1/4+F FIL-C9-N	31	G1/4	29.5	8	9.5	13
54021-C2-N	SFP.30-3/8+F FIL-C2-N	31	G3/8	29.5	10	9.5	13
54021-C9-N	SFP.30-3/8+F FIL-C9-N	31	G3/8	29.5	10	9.5	13
54121-C2-N	SFP.30-1/2+F FIL-C2-N	31	G1/2	29.5	12	9.5	14
54121-C9-N	SFP.30-1/2+F FIL-C9-N	31	G1/2	29.5	12	9.5	14
56661-C2-N	SFP.40-3/8+F FIL-C2-N	42	G3/8	36.5	10	11.5	28
56661-C9-N	SFP.40-3/8+F FIL-C9-N	42	G3/8	36.5	10	11.5	28
56681-C2-N	SFP.40-1/2+F FIL-C2-N	42	G1/2	36.5	12	11.5	29
56681-C9-N	SFP.40-1/2+F FIL-C9-N	42	G1/2	36.5	12	11.5	29
54221-C2-N	SFP.40-3/4+F FIL-C2-N	42	G3/4	36.5	18	11.5	30
54221-C9-N	SFP.40-3/4+F FIL-C9-N	42	G3/4	36.5	18	11.5	30
54321-C2-N	SFP.40-1+F FIL-C2-N	42	G1	36.5	18	11.5	32
54321-C9-N	SFP.40-1+F FIL-C9-N	42	G1	36.5	18	11.5	32
56711-C2-N	SFP.57-3/4+F FIL-C2-N	57	G3/4	42	18	14	51
56711-C9-N	SFP.57-3/4+F FIL-C9-N	57	G3/4	42	18	14	51
56741-C2-N	SFP.57-1+F FIL-C2-N	57	G1	42	23	14	52
56741-C9-N	SFP.57-1+F FIL-C9-N	57	G1	42	23	14	52
54421-C2-N	SFP.57-1¼+F FIL-C2-N	57	G1¼	44	28	16	55
54421-C9-N	SFP.57-1¼+F FIL-C9-N	57	G1¼	44	28	16	55
54521-C2-N	SFP.57-1½+F FIL-C2-N	57	G1½	44	28	16	56
54521-C9-N	SFP.57-1½+F FIL-C9-N	57	G1½	44	28	16	56

# Types beschikbaar op aanvraag met NPT-draad (National Taper Pipe Thread - ANSI-ASME B1-20).



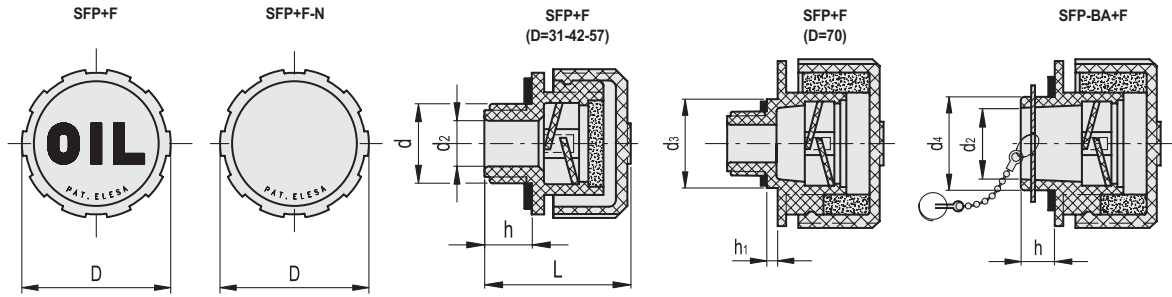


SFP+F-FOAM

Code	Beschrijving	D	d	L	d2	d3	h	h1	⚖️
54152	SFP.30-12x1.5+F FOAM	31	M12x1.5	29.5	6	-	9.5	-	10
54152-C9	SFP.30-12x1.5+F FOAM-C9	31	M12x1.5	29.5	6	-	9.5	-	10
54172	SFP.30-14x1.5+F FOAM	31	M14x1.5	29.5	8	-	9.5	-	10
54172-C9	SFP.30-14x1.5+F FOAM-C9	31	M14x1.5	29.5	8	-	9.5	-	10
53952	SFP.30-16x1.5+F FOAM	31	M16x1.5	29.5	10	-	9.5	-	11
53952-C9	SFP.30-16x1.5+F FOAM-C9	31	M16x1.5	29.5	10	-	9.5	-	11
53972	SFP.30-18x1.5+F FOAM	31	M18x1.5	29.5	10	-	9.5	-	12
53972-C9	SFP.30-18x1.5+F FOAM-C9	31	M18x1.5	29.5	10	-	9.5	-	12
53987	SFP.30-20x1.5+F FOAM	31	M20x1.5	29.5	12	-	9.5	-	12
53987-C9	SFP.30-20x1.5+F FOAM-C9	31	M20x1.5	29.5	12	-	9.5	-	12
53997	SFP.30-22x1.5+F FOAM	31	M22x1.5	29.5	12	-	9.5	-	13
53997-C9	SFP.30-22x1.5+F FOAM-C9	31	M22x1.5	29.5	12	-	9.5	-	13
53938	SFP.30-1/4+F FOAM	31	G1/4	29.5	8	-	9.5	-	11
53938-C9	SFP.30-1/4+F FOAM-C9	31	G1/4	29.5	8	-	9.5	-	11
54022	SFP.30-3/8+F FOAM	31	G3/8	29.5	10	-	9.5	-	12
54022-C9	SFP.30-3/8+F FOAM-C9	31	G3/8	29.5	10	-	9.5	-	12
54122	SFP.30-1/2+F FOAM	31	G1/2	29.5	12	-	9.5	-	12
54122-C9	SFP.30-1/2+F FOAM-C9	31	G1/2	29.5	12	-	9.5	-	12
56662	SFP.40-3/8+F FOAM#	42	G3/8	36.5	10	-	11.5	-	22
56662-C9	SFP.40-3/8+F FOAM-C9#	42	G3/8	36.5	10	-	11.5	-	22
56682	SFP.40-1/2+F FOAM#	42	G1/2	36.5	12	-	11.5	-	24
56682-C9	SFP.40-1/2+F FOAM-C9#	42	G1/2	36.5	12	-	11.5	-	24
54222	SFP.40-3/4+F FOAM#	42	G3/4	36.5	18	-	11.5	-	24
54222-C9	SFP.40-3/4+F FOAM-C9#	42	G3/4	36.5	18	-	11.5	-	24
54322	SFP.40-1+F FOAM	42	G1	36.5	18	-	11.5	-	27
54322-C9	SFP.40-1+F FOAM-C9	42	G1	36.5	18	-	11.5	-	27
56712	SFP.57-3/4+F FOAM#	57	G3/4	42	18	-	14	-	43
56712-C9	SFP.57-3/4+F FOAM-C9#	57	G3/4	42	18	-	14	-	43
56742	SFP.57-1+F FOAM	57	G1	42	23	-	14	-	43
56742-C9	SFP.57-1+F FOAM-C9	57	G1	42	23	-	14	-	43
54422	SFP.57-1¼+F FOAM	57	G1¼	44	28	-	16	-	47
54422-C9	SFP.57-1¼+F FOAM-C9	57	G1¼	44	28	-	16	-	47
54522	SFP.57-1½+F FOAM	57	G1½	44	28	-	16	-	47
54522-C9	SFP.57-1½+F FOAM-C9	57	G1½	44	28	-	16	-	47
54851	SFP.70-3/4+F FOAM#	70	G3/4	63	16	35	15	6	80
54851-C9	SFP.70-3/4+F FOAM-C9#	70	G3/4	63	16	35	15	6	80
54861	SFP.70-1¼+F FOAM	70	G1¼	59	23	-	17	-	83
54861-C9	SFP.70-1¼+F FOAM-C9	70	G1¼	59	23	-	17	-	83
54878	SFP.70-2+F FOAM	70	G2	59	23	-	17	-	88
54878-C9	SFP.70-2+F FOAM-C9	70	G2	59	23	-	17	-	88

# Types beschikbaar op aanvraag met NPT-draad (National Taper Pipe Thread - ANSI-ASME B1-20).





SFP+F-FOAM-N

Code	Beschrijving	D	d	L	d2	d3	h	h1	⚖
54152-C2-N	SFP.30-12x1.5+F FOAM-C2-N	31	M12x1.5	29.5	6	-	9.5	-	10
54152-C9-N	SFP.30-12x1.5+F FOAM-C9-N	31	M12x1.5	29.5	6	-	9.5	-	10
54172-C2-N	SFP.30-14x1.5+F FOAM-C2-N	31	M14x1.5	29.5	8	-	9.5	-	10
54172-C9-N	SFP.30-14x1.5+F FOAM-C9-N	31	M14x1.5	29.5	8	-	9.5	-	10
53952-C2-N	SFP.30-16x1.5+F FOAM-C2-N	31	M16x1.5	29.5	10	-	9.5	-	11
53952-C9-N	SFP.30-16x1.5+F FOAM-C9-N	31	M16x1.5	29.5	10	-	9.5	-	11
53972-C2-N	SFP.30-18x1.5+F FOAM-C2-N	31	M18x1.5	29.5	10	-	9.5	-	12
53972-C9-N	SFP.30-18x1.5+F FOAM-C9-N	31	M18x1.5	29.5	10	-	9.5	-	12
53987-C2-N	SFP.30-20x1.5+F FOAM-C2-N	31	M20x1.5	29.5	12	-	9.5	-	12
53987-C9-N	SFP.30-20x1.5+F FOAM-C9-N	31	M20x1.5	29.5	12	-	9.5	-	12
53997-C2-N	SFP.30-22x1.5+F FOAM-C2-N	31	M22x1.5	29.5	12	-	9.5	-	13
53997-C9-N	SFP.30-22x1.5+F FOAM-C9-N	31	M22x1.5	29.5	12	-	9.5	-	13
53938-C2-N	SFP.30-1/4+F FOAM-C2-N	31	G1/4	29.5	8	-	9.5	-	11
53938-C9-N	SFP.30-1/4+F FOAM-C9-N	31	G1/4	29.5	8	-	9.5	-	11
54022-C2-N	SFP.30-3/8+F FOAM-C2-N	31	G3/8	29.5	10	-	9.5	-	12
54022-C9-N	SFP.30-3/8+F FOAM-C9-N	31	G3/8	29.5	10	-	9.5	-	12
54122-C2-N	SFP.30-1/2+F FOAM-C2-N	31	G1/2	29.5	12	-	9.5	-	12
54122-C9-N	SFP.30-1/2+F FOAM-C9-N	31	G1/2	29.5	12	-	9.5	-	12
56662-C2-N	SFP.40-3/8+F FOAM-C2-N#	42	G3/8	36.5	10	-	11.5	-	22
56662-C9-N	SFP.40-3/8+F FOAM-C9-N#	42	G3/8	36.5	10	-	11.5	-	22
56682-C2-N	SFP.40-1/2+F FOAM-C2-N#	42	G1/2	36.5	12	-	11.5	-	24
56682-C9-N	SFP.40-1/2+F FOAM-C9-N#	42	G1/2	36.5	12	-	11.5	-	24
54222-C2-N	SFP.40-3/4+F FOAM-C2-N#	42	G3/4	36.5	18	-	11.5	-	24
54222-C9-N	SFP.40-3/4+F FOAM-C9-N#	42	G3/4	36.5	18	-	11.5	-	24
54322-C2-N	SFP.40-1+F FOAM-C2-N	42	G1	36.5	18	-	11.5	-	27
54322-C9-N	SFP.40-1+F FOAM-C9-N	42	G1	36.5	18	-	11.5	-	27
56712-C2-N	SFP.57-3/4+F FOAM-C2-N#	57	G3/4	42	18	-	14	-	43
56712-C9-N	SFP.57-3/4+F FOAM-C9-N#	57	G3/4	42	18	-	14	-	43
56742-C2-N	SFP.57-1+F FOAM-C2-N	57	G1	42	23	-	14	-	43
56742-C9-N	SFP.57-1+F FOAM-C9-N	57	G1	42	23	-	14	-	43
54422-C2-N	SFP.57-1¼+F FOAM-C2-N	57	G1¼	44	28	-	16	-	47
54422-C9-N	SFP.57-1¼+F FOAM-C9-N	57	G1¼	44	28	-	16	-	47
54522-C2-N	SFP.57-1½+F FOAM-C2-N	57	G1½	44	28	-	16	-	47
54522-C9-N	SFP.57-1½+F FOAM-C9-N	57	G1½	44	28	-	16	-	47
54851-C2-N	SFP.70-3/4+F FOAM-C2-N#	70	G3/4	63	16	35	15	6	80
54851-C9-N	SFP.70-3/4+F FOAM-C9-N#	70	G3/4	63	16	35	15	6	80
54861-C2-N	SFP.70-1¼+F FOAM-C2-N	70	G1¼	59	23	-	17	-	83
54861-C9-N	SFP.70-1¼+F FOAM-C9-N	70	G1¼	59	23	-	17	-	83
54878-C2-N	SFP.70-2+F FOAM-C2-N	70	G2	59	23	-	17	-	88
54878-C9-N	SFP.70-2+F FOAM-C9-N	70	G2	59	23	-	17	-	88

# Types beschikbaar op aanvraag met NPT-draad (National Taper Pipe Thread - ANSI-ASME B1-20).

SFP-BA+F

Code	Beschrijving	D	L	d2	d4	h	⚖
54881	SFP.70-BA+F FOAM	70	56	30	39	14	93
54881-C9	SFP.70-BA+F FOAM-C9	70	56	30	39	14	93

SFP-BA+F-N

Code	Beschrijving	D	L	d2	d4	h	⚖
54881-C2-N	SFP.70-BA+F FOAM-C2-N	70	56	30	39	14	93
54881-C9-N	SFP.70-BA+F FOAM-C9-N	70	56	30	39	14	93

Hydrauliek componenten 15