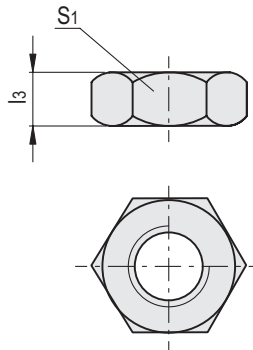
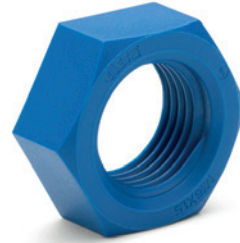
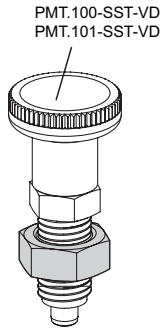


Borgmoer

voor PMT.100-SST-VD, PMT.101-SST-VD,
visueel detecteerbaar SUPER-technopolymeer

MATERIAAL

Speciaal SUPER-technopolymeer op basis van glasvezel versterkt polyamide (PA), blauwe kleur RAL 5005.



Code	Beschrijving	l3	s1	
191083	NTT-M10x1-VD	7	16	2
191085	NTT-M12x1,5-VD	8	19	3
191087	NTT-M16x1,5-VD	10	24	5
191089	NTT-M20x1,5-VD	11	30	8