

## Tubular handles

**Technopolymer and aluminium, easy cleaning**

### HANDLE SHANKS

Glass-fibre reinforced polyamide based (PA) technopolymer, matte finish.

### COVERS

- ECA.T: Polyamide based (PA) technopolymer, white colour similar to RAL 9002, glossy finish, press-fit assembly. Supplied, removable by a screwdriver.

Available also as accessory sold separately (see table).

### ANTI-ROTATION TUBE ASSEMBLING SYSTEM

Special expansion-assembly system between the tube and the handle shanks to prevent rotation during operation.

### STANDARD EXECUTION

Pass-through holes for cylindrical-head screws with hexagon socket, hexagonal-head screws or standard lock nuts.

- Aluminium tube, coating in white colour similar to RAL 9002, glossy finish. Side shanks in white colour similar to RAL 9002.

Suggested tightening torque:

- back mounting with plain holes: 8 [Nm]
- front mounting with plain or tapped holes: 15 [Nm].

### ERGONOMY AND DESIGN

The large diameter of the tube offers a good and comfortable grip; the antirotation assembly system of the handle shanks to the tube has been developed to offer a firm and secure manoeuvrability during operations.

### TECHNICAL DATA

Tensile stress: F2 values reported in the table are the result of breaking tests carried out with the appropriate dynamometric equipment under the test conditions shown in the figure with ambient temperature.

### SPECIAL EXECUTIONS ON REQUEST

Different lengths.

### ACCESSORIES ON REQUEST

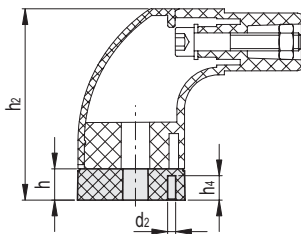
- DS-ETH: spacer sleeves in glass-fibre reinforced polyamide based (PA) technopolymer to increase the distance between the handle and the fitting surface.
- ECA.T: polyamide based (PA) technopolymer closing caps, white similar to RAL 9002 (CLEAN), glossy finish, press-fit assembly.



### ECA.T

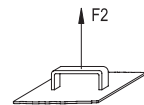
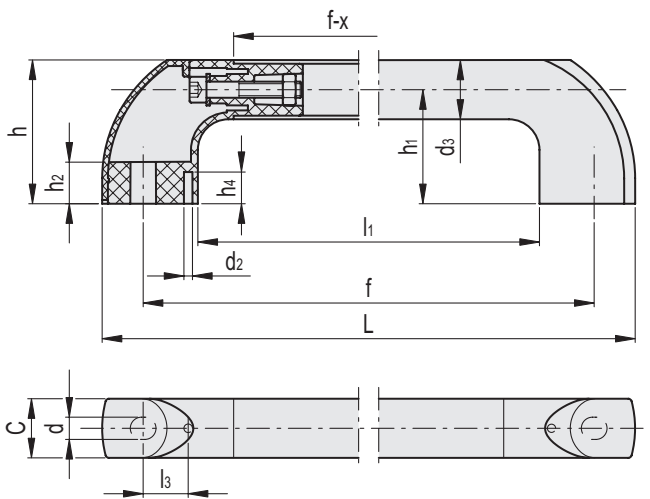
Code	Description	Cover for
29871	ECA.T 1-CLEAN	ETH.28-CLEAN
29872	ECA.T 2-CLEAN	ETH.35-CLEAN

DS-ETH



Code	Description	d2	h	h2	h4	For handle	Δ
15256	DS-ETH.35-16-CLEAN	4	16	101.5	12.5	ETH.35	25
15258	DS-ETH.35-32-CLEAN	4	32.5	118	15	ETH.35	55





Code	Description	d3	f±1	L	d	h	h1	h2	h4	l1	l3	d2	C	x	F2 [N]*	F2 [N]#	⚖️
150911	ETH.28-300-CLEAN	27.5	300	339	10.5	68	54	20	15	248	20.3	4	28	86	2400	2800	235
150913	ETH.28-400-CLEAN	27.5	400	439	10.5	68	54	20	15	348	20.3	4	28	86	2000	2300	268
150915	ETH.28-500-CLEAN	27.5	500	539	10.5	68	54	20	15	448	20.3	4	28	86	1800	2000	301
150917	ETH.28-600-CLEAN	27.5	600	639	10.5	68	54	20	15	548	20.3	4	28	86	1200	1500	335
150919	ETH.28-700-CLEAN	27.5	700	739	10.5	68	54	20	15	648	20.3	4	28	86	900	1200	368
150931	ETH.35-300-CLEAN	34.5	300	357	10.5	85	67.5	28	15	251	18.5	4	35	91	3000	3100	397
150933	ETH.35-400-CLEAN	34.5	400	457	10.5	85	67.5	28	15	351	18.5	4	35	91	2700	2800	456
150935	ETH.35-500-CLEAN	34.5	500	557	10.5	85	67.5	28	15	451	18.5	4	35	91	2500	2600	515
150937	ETH.35-600-CLEAN	34.5	600	657	10.5	85	67.5	28	15	551	18.5	4	35	91	1900	2100	574
150939	ETH.35-700-CLEAN	34.5	700	757	10.5	85	67.5	28	15	651	18.5	4	35	91	1900	2100	633
150941	ETH.35-1000-CLEAN	34.5	1000	1057	10.5	85	67.5	28	15	951	18.5	4	35	91	1200	1400	810

\* Maximum working load

# Load at breakage

