

## Rubber buffers

### Rubber and steel or stainless steel

#### STANDARD EXECUTIONS

- **DVC.3**: bushing with threaded blind hole and base plate in polished zinc-plated steel, threaded blind holes, vibration-damper body in natural rubber NR, black colour, hardness 40, 55, 70 Shore A  $\pm 5$ .
- **DVC.3-SST**: bushing with threaded blind hole and base plate in AISI 304 stainless steel, threaded blind holes, vibration-damper body in natural rubber NR, black colour, hardness 55 Shore A  $\pm 5$ .

#### FEATURES AND APPLICATIONS

The rubber buffers have been designed to damp vibrations, shocks and noises produced by moving bodies or non-balanced vibrating masses of equipment and machines.

Unlike DVA rubber buffers, under pressure these articles allow more lateral movement without leaving the vertical plane of the metal insert.

Vibrations can cause:

- malfunctioning and reduction of the machine lifespan and/or of the adjacent ones;
- damage to operator's health;
- noise.

Load diagrams for each single code are available on request.

See Technical data and guidelines for the choice(on page ).

#### SPECIAL EXECUTIONS ON REQUEST

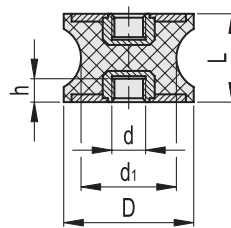
Natural rubber NR, hardness 40, 70 Shore A  $\pm 5$ , for executions with AISI 304 stainless steel base.



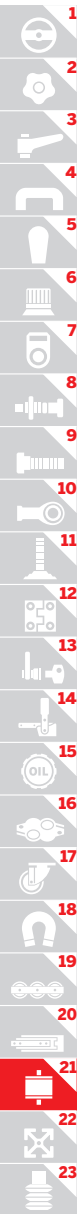


Vibration mounts 21

DVC.3

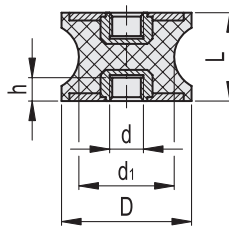


Description	D	L	d	d <sub>1</sub>	h	△	Hardness 40 Shore A			Hardness 55 Shore A			Hardness 70 Shore A					
							Code	Max load [N]	Max deflection [mm]	Stiffness [N/mm]	Code	Max load [N]	Max deflection [mm]	Stiffness [N/mm]	Code	Max load [N]	Max deflection [mm]	Stiffness [N/mm]
DVC.3-15-8.5-15-M4-*	15	15	M4	8.5	4	6	434601	94	3.75	25	434501	155	3.75	41	434701	211	3.75	56
DVC.3-15-12-15-M4-*	15	15	M4	12	4	8	434606	155	3.75	41	434506	166	3.75	44	434706	223	3.75	59
DVC.3-20-14-15-M6-*	20	15	M6	14	6	13	434613	263	3.75	70	434513	289	3.75	77	434713	374	3.75	100
DVC.3-20-14-19-M6-*	20	19	M6	14	6	16	434615	250	4.75	53	434515	273	4.75	57	434715	326	4.75	69
DVC.3-20-14-20-M6-*	20	20	M6	14	6	17	434617	248	5	50	434517	261	5	52	434717	316	5	63
DVC.3-21-16-22-M6-*	21	22	M6	16	6	18	434621	260	5.5	47	434521	281	5.5	51	434721	367	5.5	67
DVC.3-20-12-30-M6-*	20	30	M6	12	6	19	434611	178	7.5	24	434511	261	7.5	35	434711	695	7.5	93
DVC.3-20-14-30-M6-*	20	30	M6	14	6	23	434619	383	7.5	51	434519	650	7.5	87	434719	277	7.5	37
DVC.3-25-18-20-M6-*	25	20	M6	18	6	27	434631	694	5	139	434531	738	5	148	434731	1214	5	243
DVC.3-25-20-20-M6-*	25	20	M6	20	6	30	434636	705	5	141	434536	767	5	153	434736	1235	5	247
DVC.3-30-22-20-M8-*	30	20	M8	22	8	39	434643	767	5	153	434543	1010	5	202	434743	1488	5	298
DVC.3-30-18-25-M8-*	30	25	M8	18	8	42	434641	479	6.25	77	434541	597	6.25	96	434741	919	6.25	147
DVC.3-35-25-34-M8-*	35	34	M8	25	8	53	434645	2871	8.5	338	434545	1469	8.5	173	434745	2141	8.5	252
DVC.3-40-30-25-M8-*	40	25	M8	30	8	64	434655	2520	6.25	403	434555	2890	6.25	462	434755	3326	6.25	532
DVC.3-40-25-30-M8-*	40	30	M8	25	8	72	434653	1310	7.5	175	434553	1550	7.5	207	434753	2219	7.5	296
DVC.3-40-33-30-M8-*	40	30	M8	33	8	80	434659	1350	7.5	180	434559	1768	7.5	236	434759	2564	7.5	342
DVC.3-40-32-50-M8-*	40	50	M8	32	8	98	434657	575	12.5	46	434557	682	12.5	55	434757	965	12.5	77
DVC.3-40-20-48-M8-*	40	48	M8	20	8	86	434651	607	12	51	434551	713	12	59	434751	1088	12	91
DVC.3-50-42-30-M10-*	50	30	M10	42	10	125	434656	3326	7.5	443	434556	1499	7.5	200	434756	2085	7.5	278
DVC.3-55-44-45-M10-*	55	45	M10	44	10	150	434661	1037	11.25	92	434561	1247	11.25	111	434761	1818	11.25	162
DVC.3-57-25-45-M10-*	57	45	M10	25	10	140	434666	923	11.25	82	434566	1235	11.25	110	434766	1673	11.25	149
DVC.3-60-49-60-M10-*	60	60	M10	49	10	310	434671	2327	15	155	434571	2995	15	200	434771	5181	15	345
DVC.3-70-45-53-M12-*	70	53	M12	45	12	336	434676	2023	13.25	153	434576	2597	13.25	196	434776	2894	13.25	218
DVC.3-72-64-33.5-M12-*	72	33.5	M12	64	12	342	434681	2970	8.38	354	434581	3936	8.38	470	434781	5708	8.38	681
DVC.3-75-60-40-M12-*	75	40	M12	60	12	360	434686	2611	10	261	434586	3298	10	330	434786	4942	10	494
DVC.3-95-80-75-M16-*	95	75	M16	80	16	690	434691	7977	18.75	425	434591	10382	18.75	554	434791	14873	18.75	793



Vibration mounts 21

DVC.3-SST



DVC.3 - 15 - 8.5 - 15 - SST - M4 - 55  
 D d1 L Stainless steel d Shore A

Description	D	L	d	d1	h	⚖	Hardness 40 Shore A			Hardness 55 Shore A			Hardness 70 Shore A					
							Code	Max load [N]	Max deflection [mm]	Stiffness [N/mm]	Code	Max load [N]	Max deflection [mm]	Stiffness [N/mm]	Code	Max load [N]	Max deflection [mm]	Stiffness [N/mm]
DVC.3-15-8.5-15-SST-M4-55	15	15	M4	8.5	4	6		94	3.75	25	434801	155	3.75	41		211	3.75	56
DVC.3-15-12-15-SST-M4-55	15	15	M4	12	4	8		155	3.75	41	434806	166	3.75	44		223	3.75	59
DVC.3-20-14-15-SST-M6-55	20	15	M6	14	6	13		263	3.75	70	434813	289	3.75	77		374	3.75	100
DVC.3-20-14-19-SST-M6-55	20	19	M6	14	6	16		250	4.75	53	434815	273	4.75	57		326	4.75	69
DVC.3-20-14-20-SST-M6-55	20	20	M6	14	6	17		248	5	50	434817	261	5	52		316	5	63
DVC.3-21-16-22-SST-M6-55	21	22	M6	16	6	18		260	5.5	47	434821	281	5.5	51		367	5.5	67
DVC.3-20-12-30-SST-M6-55	20	30	M6	12	6	19		281	7.5	37	434811	172	7.5	23		266	7.5	35
DVC.3-20-14-30-SST-M6-55	20	30	M6	14	6	23		383	7.5	51	434819	650	7.5	87		277	7.5	37
DVC.3-25-18-20-SST-M6-55	25	20	M6	18	6	27		694	5	139	434831	738	5	148		1214	5	243
DVC.3-25-20-20-SST-M6-55	25	20	M6	20	6	30		705	5	141	434836	767	5	153		1235	5	247
DVC.3-30-22-20-SST-M8-55	30	20	M8	22	8	39	ON REQUEST	767	5	153	434843	1010	5	202	ON REQUEST	1488	5	298
DVC.3-30-18-25-SST-M8-55	30	25	M8	18	8	42		479	6.25	77	434841	597	6.25	96		919	6.25	147
DVC.3-35-25-34-SST-M8-55	35	34	M8	25	8	53		2871	8.5	338	434845	1469	8.5	173		2141	8.5	252
DVC.3-40-30-25-SST-M8-55	40	25	M8	30	8	64		2520	6.25	403	434855	2890	6.25	462		3326	6.25	532
DVC.3-40-25-30-SST-M8-55	40	30	M8	25	8	72		1310	7.5	175	434853	1550	7.5	207		2219	7.5	296
DVC.3-40-33-30-SST-M8-55	40	30	M8	33	8	80		1350	7.5	180	434859	1768	7.5	236		2564	7.5	342
DVC.3-40-32-50-SST-M8-55	40	50	M8	32	8	98		575	12.5	46	434857	682	12.5	55		965	12.5	77
DVC.3-40-20-48-SST-M8-55	40	48	M8	20	8	86		607	12	51	434851	713	12	59		1088	12	91
DVC.3-50-42-30-SST-M10-55	50	30	M10	42	10	125		3326	7.5	443	434856	1499	7.5	200		2085	7.5	278
DVC.3-55-44-45-SST-M10-55	55	45	M10	44	10	150		1037	11.25	92	434861	1247	11.25	111		1818	11.25	162
DVC.3-57-25-45-SST-M10-55	57	45	M10	25	10	140	923	11.25	82	434866	1235	11.25	110	1673	11.25	149		
DVC.3-60-49-60-SST-M10-55	60	60	M10	49	10	310	2327	15	155	434871	2995	15	200	5181	15	345		
DVC.3-70-45-53-SST-M12-55	70	53	M12	45	12	336	2023	13.25	153	434876	2597	13.25	196	2894	13.25	218		
DVC.3-72-64-33.5-SST-M12-55	72	33.5	M12	64	12	342	2970	8.38	354	434881	3936	8.38	470	5708	8.38	681		
DVC.3-75-60-40-SST-M12-55	75	40	M12	60	12	360	2611	10	261	434886	3298	10	330	4942	10	494		
DVC.3-95-80-75-SST-M16-55	95	75	M16	80	16	690	7977	18.75	425	434891	10382	18.75	554	14873	18.75	793		